



ABOUT US

We are a global brand that specializes in consulting, manufacturing & constructing aluminium helidecks and providing heliport solutions, for both offshore and land-based helidecks. We focus on delivering effective and superior solutions for marking assets and landing areas for guaranteed safe operations. We have been a huge part of offering our trusted services to both government and private organizations.

Our wide range of solutions focuses on areas where there are weight limitations and also provide low maintenance costs without compromising on the strength of structures. We cater to offering our services to suit every specific requirement to all brands and businesses locally and internationally.

OUR PRODUCTS

- HELI-30 Aluminium Profile
- HELI-150 Aluminium Profile
- Perimeter Light (Flush/Surface Mounted)
- Flood Light
- Wind Direction Indicator
- Beacon Light
- Solar Obstruction Light
- Helipad Lighting Controller

Other systems which we can integrate with

- Status Light
- Circle & H Light
- HAPI-PLASI
- Ex-Proof Light.



FLUSH MOUNTED PERIMETER LIGHT

As an alternative to elevated lights, flush mounted perimeter lights are an excellent choice for locations where elevated lights are not suitable or can cause interference to passing aircraft and maintenance vehicles.

- Casting aluminum alloy strong body, base can with gray powder coating finish.
- Clear Glass lens very good impact resistance, high temperature resistance and very good light beam transmission.
- Alternate Model is available without base CAN for mounting directly on the aluminium helideck.

Effective Intensity: >30 Candela

Power Consumption: 15 W

IP Rating: IP67

Lifespan of LED: 100000 Hours

Power Supply: 85-265V AC



SURFACE MOUNTED PERIMETER LIGHT

Perimeter lights are one of the most important safety features on the helipad. They are used to Mark and illuminate the FATO and TLOF and they help the pilot locate the pad and safely land During night operations and inclement weather conditions.

- Corrosion resistance, anti-ultraviolet.
- The housing adopts integrated die-casting aluminum, with excellent performance of heat sinking and sealing.
- The optical module of this product adopts reflex housing, high efficiency of light gathering, no extra scattered light pollution.

Effective Intensity: >5 Candela

Power Consumption: 5 W

IP Rating: IP66

Lifespan of LED: 100000 Hours

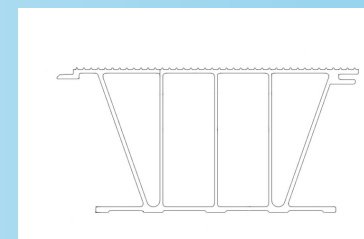
Power Supply: 100-250V AC



HELI-30 ALUMINIUM PROFILE

Cranton has designed a great alternative to the typical concrete helipad. HELI – 30 is specifically designed for ground or retrofit application. The 250mm X 250mm wide aluminium panels fit together in a tongue & groove fashion that makes installation a breeze.

Aluminum helipads will never deteriorate the way a concrete pad will, and it can be moved/ relocated as your facility expands. It has an internal cavity specifically designed for snowmelt equipment.



HELI-150 ALUMINIUM PROFILE

HELI- 150 is specifically designed to withstand more load. The 300mm X 300mm wide aluminium panels with a side wall height of 150mm which offers very high loading capability. It is also low on maintenance and has high durability.



FLOOD LIGHT

Flood Light will be used on heliports for flood lighting of the Final Approach & Take-off (FATO) and Touchdown & Lift-off Area (TLOF) outside of the perimeter areas, to illuminate any obstruction and landing zone.

- High efficiency LED module with low power consumption.
- Lightweight die-casting aluminium design, corrosion resistance.
- This product adopts high power Led light source which can operate continuously over 50000 hours.

Effective Intensity: >7000 Candela

Power Consumption: 25 W

IP Rating: IP65

Lifespan of LED: 100000 Hours

Power Supply: 100-265V AC



WIND DIRECTION INDICATOR

According to ICAO requirement, every helipad area must have at least one wind direction indicator. Installation position must be not interfered by around object and airflow formed by helipad wing and make sure pilot can recognize wind cone at 200 meters clearly.

- No obstruction for smooth rotation due to excellent internal design.
- Available in 304 stainless steel or 316 optional for very corrosive environment.
- 1.5 meters to 7 meters pole in height available.

Material: 304 SS, 316 SS.

Windsock Weight: 0.88 Kg

Windspeed: upto 260 Kph



BEACON LIGHTS

Light is a white flashing light, as a distance visual guidance. It's so important especially when the ambient light makes it difficult to see there is a heliport. According to ICAO, every heliport should have at least one light beacon. It should be installed above or near the heliport, it will be better if it is installed in an elevated place.

- High efficiency LED module with low power consumption.
- Light comes with surge protection device for harsh environment.
- Effective Intensity: >2500

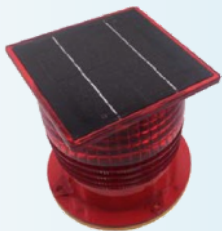
Candela Power Consumption: 15 W

Flash Frequency: 4 times / 2 minutes

IP Rating: IP65

Lifespan of LED: 100000 Hours

Power Supply: 100-250V AC



SOLAR OBSTRUCTION LIGHT

Low light intensity type B red flash aviation obstruction light. It is mainly used in the high-rise buildings and structures below 45 meters, such as TV transmission tower, cable-stayed bridge column, tall chimneys, airports, heliports, communication towers, to serve as aviation obstruction warning.

- The control circuit adopts the special controller of the obstacle lamp with micro-power consumption, which reduces the energy consumption of the control circuit itself and greatly improves the product reliability.
- The shell adopts the structure composed of PC+ABS, which is anti-seismic and anti-corrosion.
- The solar panel adopts the international advanced, low illumination, high efficiency solar panel, with deep cycle solar battery for power supply.

Effective Intensity: >32 Candela

Power Consumption: 3W

IP Rating: IP65

Lifespan of LED: 100000Hours

Power Supply: 6V DC



HELIPORT LIGHTING CONTROLLER

Now there is a new way to control your lighting and peripheral circuits using Cranton new Remote Lighting Controller (RLC) which integrates both traditional VHF PCL and adds SMS control and monitoring with the option of automatic weather reporting (wind speed/direction, temperature, dew point and pressure) right from your helipad.

- Standard construction features a rugged NEMA 4/12 enclosure.
- Our solid state receiver design makes for extremely low power consumption.
- Standard long life mechanical relays ensure compatibility with your equipment.

Enclosure: NEMA 4/12 Enclosure

IP Rating: IP43

Power Supply: 90-265V AC

CONTACT US

11A, Design Works, William Street, Felling, NE10 0JP, United Kingdom.

info@crantonelectric.com

| +44 738 7005377

www.crantonelectric.com